



# Dex Global Logistics

– Your Trusted Partner for Global Multimodal Logistics

Specializes in Project Logistics & Energy storage systems

# Company Overview



## DEX Global Logistics (DGL)

Headquartered in Shenzhen, China since 2014, DGL has established itself as a global leader in integrated multimodal logistics solutions. Committed to embedding sustainability into every aspect of our operations, we prioritize customer satisfaction by delivering tailored solutions and dedicated account management to address complex supply chain challenges. Through rigorous compliance protocols, transparent processes, and reliable execution, we ensure operational excellence at every stage of the supply chain.

### Core Strengths:

- ✓ specialized storage + Class 8/9 DG-certified
- ✓ 50+ logistics experts with 10+ years average experience
- ✓ Ocean/Air/Rail/Road/Intermodal services
- ✓ 24/7 bilingual support Real-time visibility + tailored strategies

### Trusted by Global Industries:

- 🔋 New Energy (batteries, PV modules)
- 🚚 Automotive components & EV logistics
- ⚙️ Heavy machinery & industrial equipment



# Core Value



## Agility

**Rapid response to client needs with flexible solutions.**



## Reliability

**99.6% on-time delivery record through rigorous quality control**



## Innovation

**AI-driven logistics platform achieving 30% operational efficiency improvement**



## Collaboration

**Long-term partnerships with 95% client retention rate**



# Corporate Culture



The inspiration for the "Dex" brand comes from the Latin word "Dexter", meaning "right hand" or "agile", symbolizing agility, efficiency, and reliability in the logistics field. Dex Global Logistics Co.,Ltd takes "Dex" as its brand name, aiming to be a powerful assistant and reliable partner for every customer. Inspired by the world's largest logistics company, Kuehne + Nagel, the company aspires to build a company with the same reputation and strength, and become a leader in the global supply chain management field. The company is committed to providing end-to-end multimodal transport logistics solutions, and through continuous innovation and optimization of services, it expands its global network. It has a professional team, an advanced supply chain management system, and provides customized logistics solutions to meet the specific needs of each customer.



# Core Business



**Integrated Multimodal  
Transportation**

**Logistics Solutions for  
Specific Industries**

**ICD and Value-  
Added Services**



# Why Partner with DGL



## Global Partners, Seamless Cross-Border DeliveriesLogistics

Harnessing innovation and operational excellence, we expand our global logistics network through 200+ partnerships and a multi-regional service platform. This integrated system ensures agile cross-border cargo flow from clearance to last-mile delivery, achieving 98.6% on-time compliance and resilient supply chain.



## Global Logistics Experts

Our certified logistics specialists with 15+ years of cross-border experience, engineer end-to-end supply chain solutions. In New Energy, Communication Equipment, Auto Parts, Construction Machinery, Photovoltaics (PEC) and beyond. Deep understanding of EU/US/APAC regulations (ADR/RID) and Chinese export compliance.



## Tech-Driven Custom Logistics

We deeply understand that every client's requirements are distinct, delivering tailored logistics solutions designed to align with your unique operational needs. Guided by a customer-centric philosophy and committed to sustainable logistics frameworks, we address specific challenges through customized service packages and dedicated support systems.

# Multimodal Transportation Business



Our shipping routes not only cover major ports but also have access to some niche ports, which enables us to reach more diverse destinations and meet various customer needs. With a wide range of shipping options, from container ships to bulk carriers, we can handle all types of cargo for your shipments.

Our comprehensive service process starts with an in - depth consultation to understand your specific shipping requirements, followed by meticulous planning, strict cargo monitoring during transit, and finally timely delivery at the destination.



Throughout the shipping process, we maintain clear and constant communication with our clients, providing regular updates on the status of their shipments, so they can always be well – informed.

Ensures that your goods can be transported with maximum efficiency and minimum delay. Our service process is designed to be flexible, quick adjustments in case of unforeseen circumstances such as port strikes or bad weather during shipments.



# Global Ocean Freight Products

## Euro-Mediterranean Route

Select two to three shipping companies with high port coverage and high customer applicability among the allied shipowners as the main partners to cover the major domestic ports. The headquarters arranges cross - booking to improve the efficiency of releasing shipping space.

## Middle East, India, Pakistan, Red Sea

The regional routes have established in - depth cooperative relationships with all shipping companies. In terms of the selection of shipping companies, it has strong complementarity and can cover the major ports of departure across the country.

## Africa Route

There are sufficient shipping space on the routes, and bookings for heavy cargo and special containers can be accepted; the contract prices are stable, with guaranteed shipping space and containers.



## Australia & New Zealand Route

The shipping space on the Australia routes is abundant. For the Western Australia break - bulk project cargo, it is shipped irregularly.

## North America Route

By providing customers with services from different shipping companies, accurate shipping schedule arrangements are achieved. A professional logistics team and complete service processes can effectively provide customers with high-quality shipping services.

## Latin America Route

Regional routes have established in - depth cooperative relationships with various shipping companies. The marine transportation products are rich in diversity, with prices closely in line with market conditions, highly targeted. Meanwhile, we also provide customers with stable one - stop door - to - door comprehensive logistics solutions.



# International air freight products



- Commercial flights: Feature fixed flight schedules, guaranteed cargo space, and extensive coverage of destinations.
- Chartered flights: Boast high flexibility and strong selectivity.
- Multimodal transportation: Offer price advantages and diverse solutions, with self-sustained transportation capacity and scale effect.
- Air-air multimodal transportation: Enable air-air multimodal transportation from locations to Central and South America or Europe.
- Sea-air multimodal transportation: Facilitate sea-air global transportation from places like ICN, DXB, LAX, and HKG.
- Land-air multimodal transportation: Realize land-air multimodal transportation from Vietnam to China and other routes.

# Multimodal transport



## RAILWAY COMBINED TRANSPORT

### Sea-Rail combined transportation

We can provide more than 100 sea-rail intermodal routes from Changzhou/Zhenjiang/Nanjing/Chuzhou/Bengbu/Xuzhou and other places to Shanghai Port, Lianyungang, Guangzhou Port, Yantian Port and other sea-rail intermodal routes.

### International train service

Connecting with China's hub assembly center, we provide "domestic + international" connecting train services. Provide customers with door-to-door comprehensive logistics services for China-Europe, Central Asia, and Far East routes, shortening transportation time by 30%



### Road-rail combined transportation

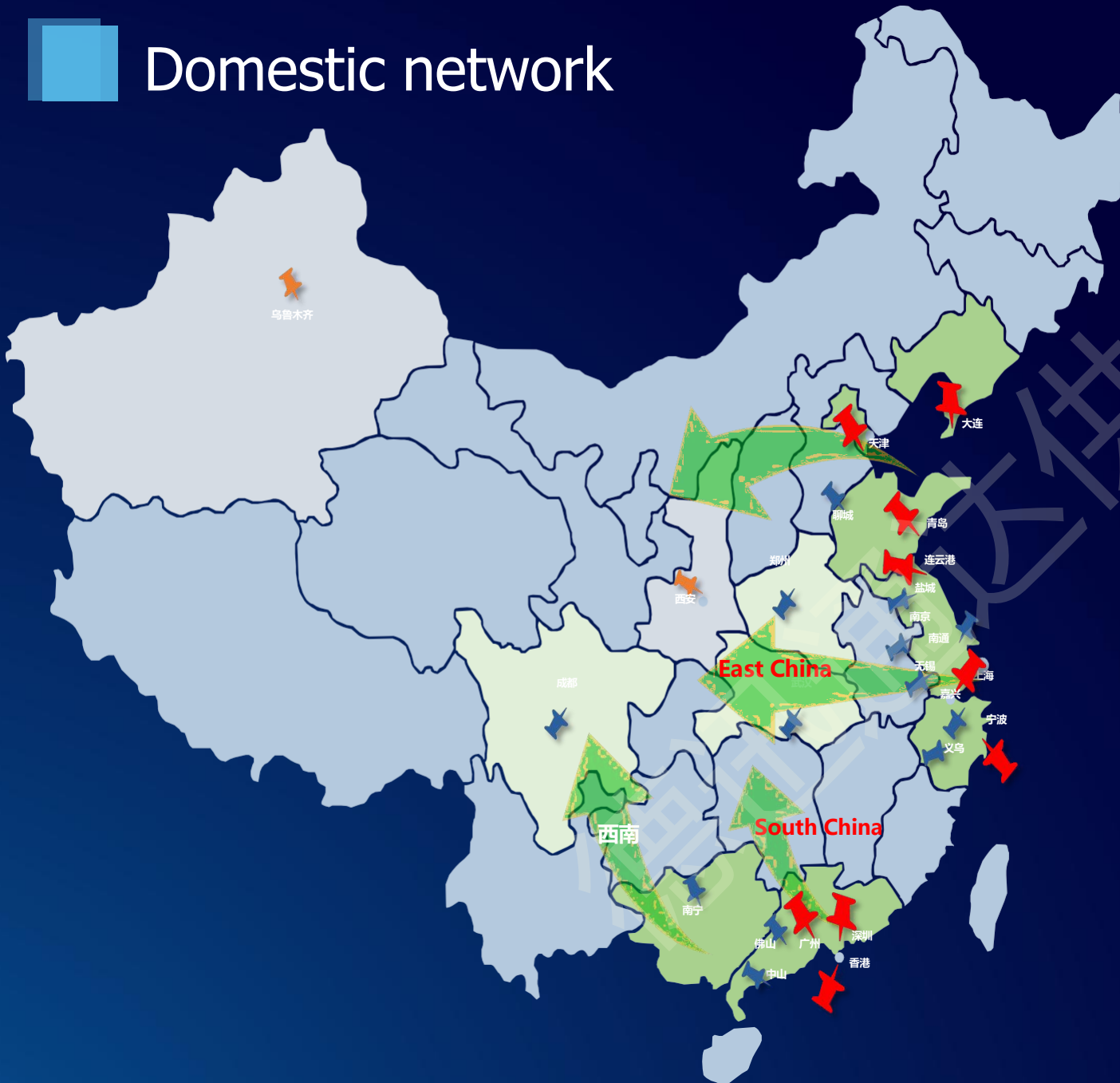
Relying on the core resources of multimodal transport such as controllable transportation capacity of domestic road transportation, railway stations with complete functions, and strategic cooperation relationships between railway bureaus, we focus on bulk commodities and home appliances such as coal, cement, steel, grains and oils, nonferrous metals, and carry out complete railway/container road-rail intermodal transportation services.

### Innovative green logistics

The sea-rail intermodal transport method is especially suitable for the transportation of goods with high added value, high timeliness requirements, large batches, and centralized shipments. Such as photovoltaic products, automobiles and parts, home appliances, electronic products, etc.



# Domestic network



## East China:

The Yangtze River barge network provides intensive barge transfer services to the middle and lower reaches of the Yangtze River, with close customer relationships

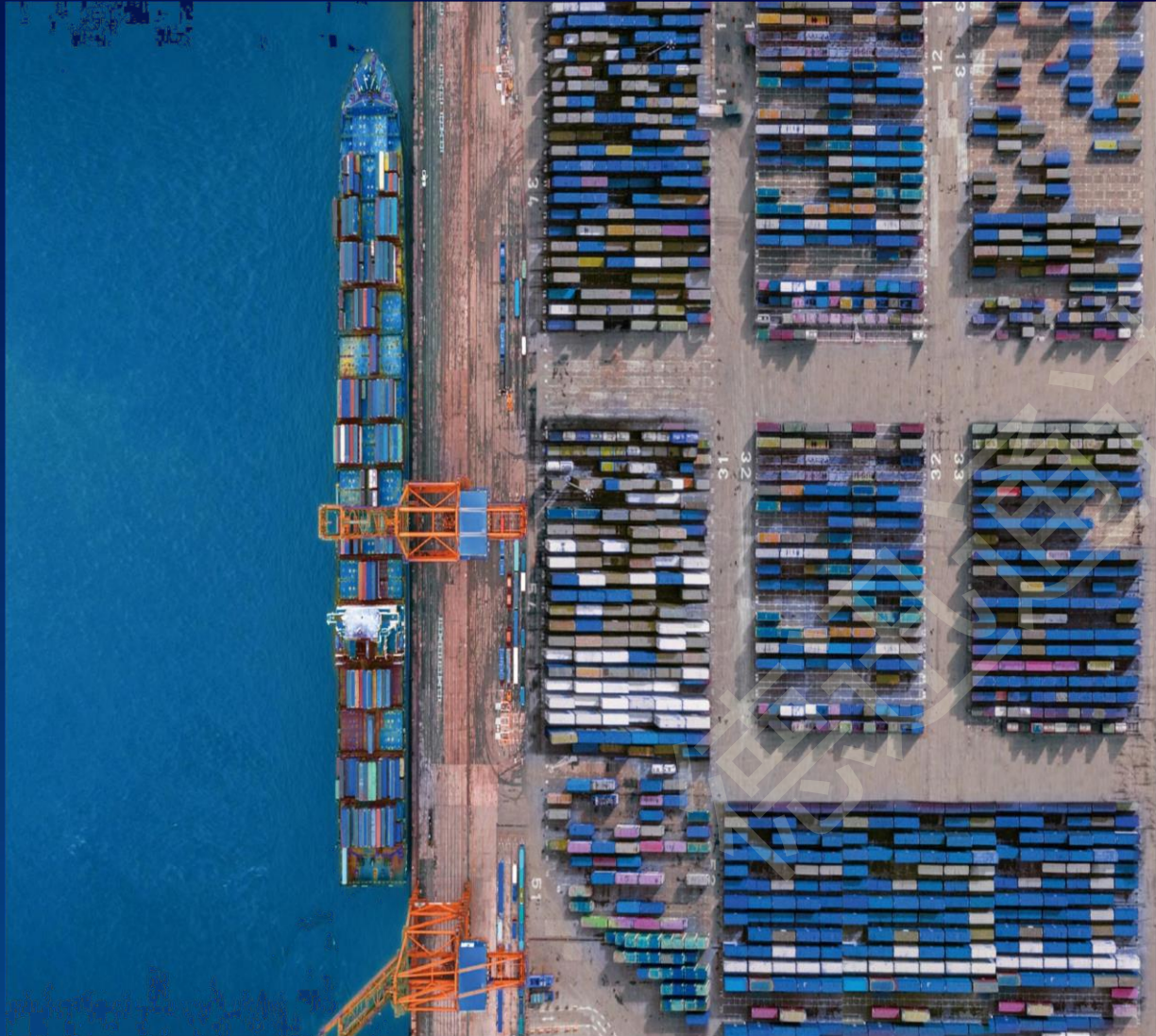
Rich railway stations, sea-rail combined transportation and iron-iron combined transportation resources provide customers with diversified comprehensive service solutions Professional air freight team provides board packaging services to major countries/regions/cities around the world

## South China:

Backing on the group headquarters, leveraging the resource advantages of the headquarters, meeting customers 'customized service needs, and providing customers with comprehensive high-quality integrated logistics services

Shenzhen has deployed satellite receiving points to radiate to the Pearl River Delta and Guangdong-Hong Kong-Macao regions to provide multimodal transport services of water and rail

# Providing Warehousing and Storage services at different China ports





# ISO Tank container import and export



We have powerful global agency, allied with internationally renowned container companies, to provide customers with competitive professional services from its diverse range of container tanks

We provide professional ISOTANK and liquid bag rental services as well as customized logistics services.

We Provide professional international and domestic transportation services for a variety of difficult special liquid chemicals, including IMDG dangerous goods





# Case: German BMW lithium battery equipment production line delivery project

## Project introduction:

Port of Hamburg – Munich Volume: 2 \* 40OT (OH) + 16 \* 40FR (OW) + 27 \* 40FR (OWOH)

The 830-kilometer cross-border logistics project from Hamburg Port to BMW's Munich facility presented unprecedented challenges, including tight deadlines during the critical pre-Christmas season. Our team executed a complex cross-border logistics plan through:

1. Multi-level coordination: Daily sync-ups with overseas operations teams and on-site customer representatives
2. Regulatory navigation: Expedited road transport permit approvals via strategic collaboration with local authorities
3. Risk mitigation: Real-time shipment tracking and contingency routing protocols
4. Despite customs inspections and 3 route reroutes due to seasonal weather, we achieved 100% on-time delivery 3 days ahead of the New Year's Eve deadline, ensuring BMW's production line continuity through optimized container utilization



Bescheidversion 20220355320\_B\_02 Seite 2 von 7

Vorbescheidungsantrag für  
Güterkraft- und Schwertransporte **VEMR**

Bauartbedingte Höchstgeschwindigkeit des Transports: 90 km/h ☐ Fahrzeug mit Ketten- oder Ruppenlaufwerk

6. Maße und Massen	Gesamt	Länge [m]	Breite [m]	Höhe [m]	Transportschwerlast auf [m]	Leermasse Zugfahrzeug [t]	Leermasse Anhänger [t]	Gesamt [t]
Leertarif		17	3,26	4,2	4-15	8,5	7,5	40
Laufahrt								

Die Ladung liegt dabei:

nach vorn	nach rechts	nach links	nach hinten
	0,38 m	0,38 m	6,5 m

Bei der nach hinten überragenden Ladung beträgt der Abstand von der letzten Achse bis zum Ladungsende 2,5 m.  
Maximale Breite der Ladung beginnt in Höhe von:

7. Leertarif:

Reifen- / Doppelreifenbreite der maximalen Achslast: —

Spurweite zwischen den Außenkanten der äußeren Räder gemessen: —

Achsen	1. Achse	2. Achse	3. Achse	4. Achse	5. Achse	6. Achse	7. Achse	8. Achse	9. Achse	10. Achse
Achslast [t]										
Achsenabstand [m]										
Räder je Achse										

8. Leertarif:

Reifen- / Doppelreifenbreite der maximalen Achslast: —

Spurweite zwischen den Außenkanten der äußeren Räder gemessen: —

Achsen	1. Achse	2. Achse	3. Achse	4. Achse	5. Achse	6. Achse	7. Achse	8. Achse	9. Achse	10. Achse
Achslast [t]										
Achsenabstand [m]										
Räder je Achse										

9. Fahrtweg:

Fahrtweg: 1

Fahrtweg: 1.1 - Lastfahrt

Start: 21155 Hamburg, Antwerpenstraße 1A (HPP - Hanse Project Packing GmbH)

Ziel: Antwerpenstraße - Dradenstraße - Finkenwerder Straße - Finkenwerder Ring - Finkenwerder Straße - AS Hamburg-Wallersdorf - A7 - AK Hannover-Ost - A2 - AK Magdeburg - A14 - AK Schkeuditz - A9 - AK München-Nord - A99 - AK München-Ost - A8 - AS Parsdorf - Gruber Straße - 85599 Vaterstetten, Gruber Straße (Pa. BMW)

10. Antragsrelevante Mitteilungen:

am 17.01.2023: Kennzeichenergänzung DA69735/OST 4VN1 + OST 2TR/OST 2WF6

Ausweisentscheidung für andere EGB

Anfangsort des Schwertransportes

11. Nachweise:

Wenn es sich um einen Verkehr über einen Fahrtweg von mehr als 250 km handelt, hat der Antragsteller nachzuweisen:

1. Eine Schienenbeförderung oder eine getrocknete Beförderung Schiene/Straße ist nicht möglich oder würde unverhältnismäßige Mehrkosten verursachen, wenn nach Nummer 7.4 VwV zu § 29 Abs. 3, § 40 Abs. 1 Nr. 5 StVG ein Anhörungsverfahren vorgeschrieben ist und eine Gesamtbreite von 4,20 m oder eine Gesamtbreite von 4,80 m (je nach Fahrzeug und Ladung) nicht überschritten wird.
2. Eine Beförderung auf dem Wasser oder eine nationale Beförderung Wasser/Straße ist nicht möglich oder würde unverhältnismäßig



# Case: European lithium battery equipment DAP transportation

Shenzhen A Technology Co., Ltd. exports lithium battery equipment project

Product name: Main automatic feeding and mixing system, lithium-ion battery positive and negative coating machine. Battery diaphragm double-sided coating equipment, laser ear cutting machine

Shipments :Shenzhen – Hamburg      8 \* 40'FR + 10 \* 40'HQ  
40FR size: 11590 \* 2230 \* 4180 (MM)    25T  
Service Scope: Door to Door

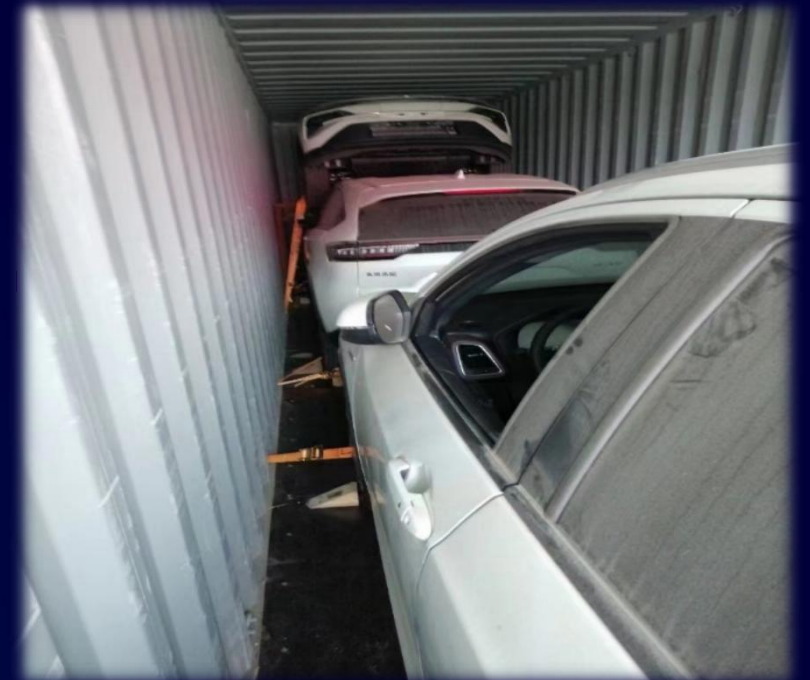
Project challenges and solutions:

- ◆ The customer's products are lithium battery equipment, and there is less experience in exporting for the factory, and most of the goods are in the case of irregular oversize, our company arranges professional packaging company to coordinate customer and production purchasing and other department personnel carry out the packaging work after dismantling the machine, and formulate the loading method according to the details of the goods plan and schedule the appropriate shipping schedule.
- ◆ Due to the limitations of the factory site and loading capacity, coordinate the crane forklift to the factory for loading, lashing and reinforcement. And arrange the transportation of bulk goods in transit until the cabinet is loaded to avoid additional overdue costs



# Case: New energy vehicle container export

- Solve the problem of how to realize the safe unloading of containers at the destination port.
- Successfully realized the upgrade of vehicle projects in Cambodia, Morocco and other countries from 2-pack-1 to 3-pack-1, which saved costs and ensured safety, and won high recognition from customers.
- Deliver customized brackets in combination with vehicle size design to help customers increase efficiency.





# Case: Scattered - India, New Energy Bus Chassis

## Project End-to-End Service



- Under the premise of ensuring safety, we provide customers with the most economical packaging advice and the best shipping solutions.
- Summary:  
Give full play to professional advantages and cooperate strategically with competitive shipowners on the route to ensure the smooth delivery of the project





# Case: Successfully delivered 1,000+ energy storage cabinets for ENEL projects across Italy



Ocean

**Maritime Transport Challenges:**  
The shipping lines at the departure port had limited single-voyage capacity, shipment of 36-ton UN3536 energy storage containers.

Delivery

- Italian Land delivery faced multiple obstacles:
- Complex Italian road infrastructure
- Bridge weight restrictions
- Lengthy permit acquisition process

Solution

- Backup plan: Launch the transportation mode of energy storage train connection.
- Upon arrival by sea, utilize the RORO transfer approach on the





# Case: Delivery different types of energy storage products to Chile & UK





Thank you for watching !

